

New Listing

Ulysses C. Maurille

presents

357 Half Moon Lane #9



Townhouse Loft Living!

2 story end unit townhouse with separate entrance. Bright with additional windows on both levels. Enjoy added privacy with no neighbor on one side. Nicely secluded location with views of tranquil trees & lush greenery. Enjoy your morning coffee out in your own private patio. Sleek & modern kitchen with well appointed appliances and built-in microwave. Cozy up to a warm electric fireplace or enjoy a snack atop the breakfast counter. What a great place to call home. it feels more like a house than a condo.



Ulysses C. Maurille
Your On-Site Realtor

ofc 650-994-0300 / cel 415-786-5900

- Fireplace w/ Mantel
- Remodeled bath
- Deeded 1 car parking
- Additional overhead storage cabinet

\$489,000

Additional Information:
www.crowncolony.pro

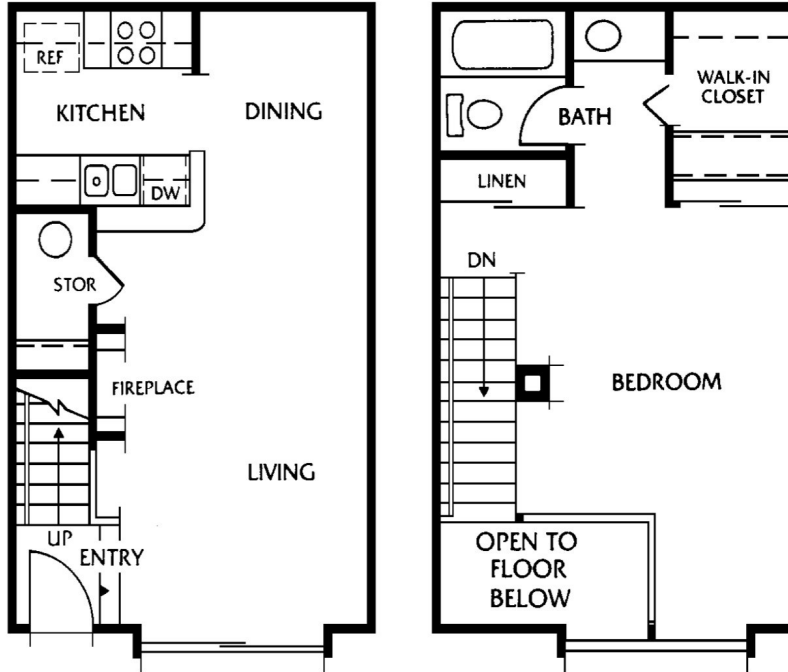
Built in 1974. Converted to condos in 1984. 788 sq. ft.

Deeded 1-Car parking space, with additional overhead storage cabinet

Laundry room located nearby with 6 full size Washers & Dryers

*HOA Dues \$410.41 month includes water and garbage, common insurance

Essex Floor Plan



Complex Amenities

Over 23 acres of lush greenery, babbling brooks, and mature trees. Relax by the duck pond & water fountain, in one of two cozy gazebos, or on one of the many well manicured grassy areas. A private community with gated entry and 24-hour security. Three story clubhouse with heated swimming pool, hot tub, separate men's and women's sauna & gym, recently refurbished billiards room, quiet study areas, and a cozy library. Enjoy a 2nd adult only Outdoor pool & hot tub. Convenient Free shuttle bus to & from nearby BART Station during commute hours a service only offered at Crown Colony. Over 450 visitor parking spaces for friends & relatives while visiting. Immediate access to 280 North & South.

Close to Serramonte Shopping Center & Gellert Market Place with shopping, restaurants, gas stations and 24-hour convenience store right outside the complex.

