

# CROWN COLONY

PROPERTIES

*presents*

## ***381 Half Moon Lane #305*** ***“The Collingwood Plan”***



Gorgeous top floor unit, sunny & bright. A spacious private deck looks out to tall, luscious trees. The beautifully remodeled kitchen boasts granite counters, new shaker style wood cabinets, a built-in microwave, and glass top electric stove. On down time, cozy up to an electric fireplace or enjoy a snack break on top of the breakfast counter. The tiled bath also features a modern glass shower enclosure. Bamboo floors are laid throughout, a remodeled vanity has elegant granite counters, and a spacious walk-in closet is perfect for the clothing enthusiast. Double pane windows and sliding glass patio door. Come see this special place!



***Asking \$519,000***  
***Ulysses C. Maurille, Broker***  
***Your Exclusive On-Site Realtor***  
***650/994-0300***



### Additional Information:

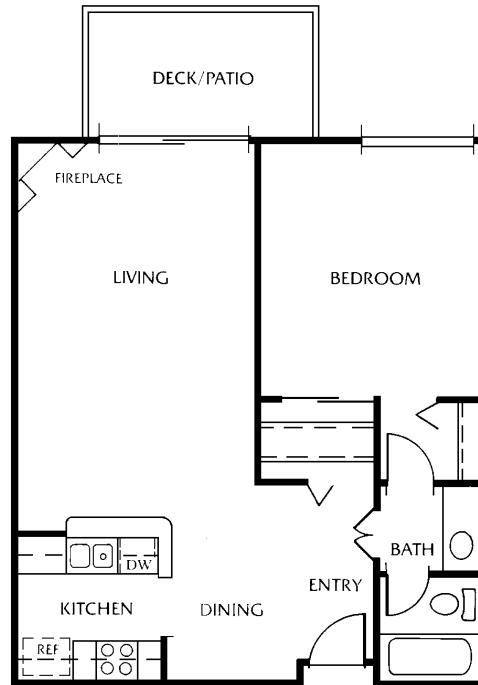
Built in 1974. Converted to condos in 1984. 717 sq. ft.

Deeded 1-Car parking space, with additional overhead storage cabinet

Laundry room located nearby with 6 full size Washers & Dryers

\*HOA Dues \$437.99 month includes water and garbage, common insurance

## Collingwood Floor Plan



### Complex Amenities

Over 23 acres of lush greenery, babbling brooks, and mature trees. Relax by the duck pond & water fountain, in one of two cozy gazebos, or on one of the many well manicured grassy areas and a dog run. A private community with gated entry and 24-hour security. Three story clubhouse with heated swimming pool, hot tub, separate men's and women's sauna & gym, recently refurbished billiards room, quiet study areas, and a cozy library. Enjoy tennis & basketball on nicely resurfaced courts, a bright & sunny outdoor pool & hot tub. . Over 450 visitor parking spaces for friends & relatives while visiting. Immediate access to 280 North & South.

Close to Serramonte Shopping Center & Gellert Market Place with shopping, restaurants, gas stations and 24-hour convenience store right outside the complex.

